

EDA Series The Educated choice

System	EDA
→ Processor	Intel® PXA270 624 MHz based on Intel® XScale™ microarchitecture
→ Memory	System memory (RAM) 64 MB Flash memory (ROM) 128 MB Supplied with 1Gb SD Card
→ GPS	Full integrated SiRF Star III Chip
→ Display	3.5-inch VGA 480 x 640 color transfective TFT Touchscreen, 65.536 colors, LED backlight
→ Wireless LAN	Integrated, 802.11 b/g, Wi-Fi certified
→ Bluetooth V1.2	Integrated
→ Docking station	Optional class dock

Interfaces

1 x built-in microphone, 1 x speaker, 1 x headphone (3.5 mm) 4 pin
1 x IrDA, 1.3 Megapixel; integrated picture and video capturing
USB 1.1 (slave) via sync cable

Expansion Slots

SD card/MM card (SD I/O)

Battery

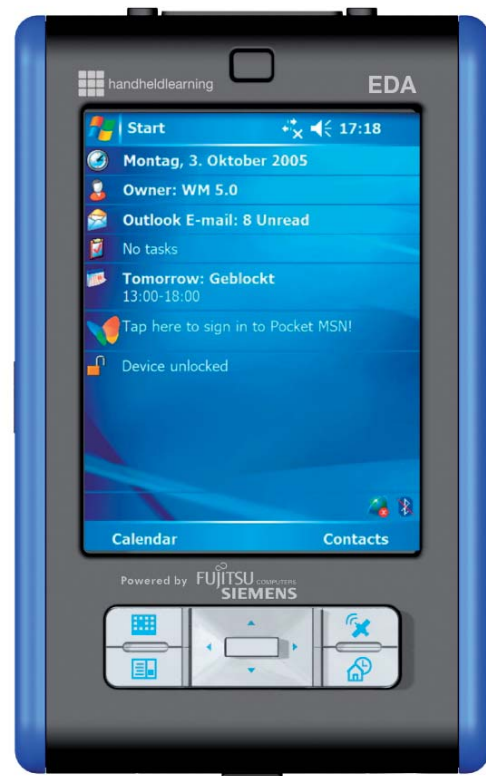
Exchangeable Lithium-Ion battery, rechargeable, Main battery 1200 mAh

Power Supply

Rated voltage: 110 – 240 V, Power cord with EU plug, UK plug additionally available, standard in UK versions Standby time: Fully charged 500 h

→ Contact

Fujitsu Siemens Computers
Fujitsu Siemens Computers Campus
The Boulevard
Cain Road
Bracknell
RG12 1HH
Phone: 01344 475000



Battery life may vary depending on product model, configuration, applications, power management settings and features utilized. Battery recharge time depends on usage.

Dimensions / weight (prototype estimate)

Dimensions (H x W x D): 121 x 76 x 17.5 mm
Weight: app. 190g

Wireless Technologies (WLAN)

Import and usage according to country-specific regulations. The EDA is Wi-Fi certified

Operating system

Microsoft® Windows Mobile™ 5.0 Premium Edition

EDA Series

The Educated choice

Handheld Learning in and out of the classroom has never been so easy.

Based on the underlying technologies of the award winning Pocket LOOX N560 Series, this unit is specifically designed for the Education market and is supplied in a rugged format.

Key features/benefits of the EDA:

- **Lightweight** unlike laptops or so-called "Ultra-Mobile PC's"
- **Instant-on** the EDA is ready to use as soon as it's switched on – no waiting 10 minutes to boot-up or shut down
- **Small** it doesn't dominate the learning environment
- **Robust** can easily withstand falling from a desk or the rigours of the school bag. Has undergone extensive quality tests, with "childproof" custom power and USB connection and comes with 2 year warranty as standard.
- **Connected** fast wireless connectivity via 802.11b/g or Bluetooth
- **Virus-free** the EDA's operating system does not host computer viruses
- **Stamina** battery charge lasts a typical school day
- **Built-in GPS** ideal for location based learning and G.I.S. Applications low power consumption – unlike plug-in GPS units
- **Built-in Camera** capture material for later reference or creative projects



- **Software** Microsoft® Windows Mobile™ 5.0 Premium Edition
PLUS
REDHALO RedHalo bundle – a startling array of software including:
 Inspiration – the leading mind mapping software in schools.
 PhatPad – Award winning note taking, drawing, diagram creating, image annotating, handwriting recognising, animating software which kids and adults adore and is an essential add-on for any Pocket PC.
 Calligrapher – Vastly improves handwriting recognition on Pocket PC devices for natural handwriting input.
 Pocket Painter – Painting and image processing
 Opera – Ultimate mobile web-browser
 Red Media Composer – Multimedia presentation tool
 Red Flipper – Turns images into animation
 A years subscription to the RedHalo handheld learning platform.
 Worth £100 +

- **Training** Each device comes with a 50% discount voucher for EDA Primer Professional Development Day. Worth £75

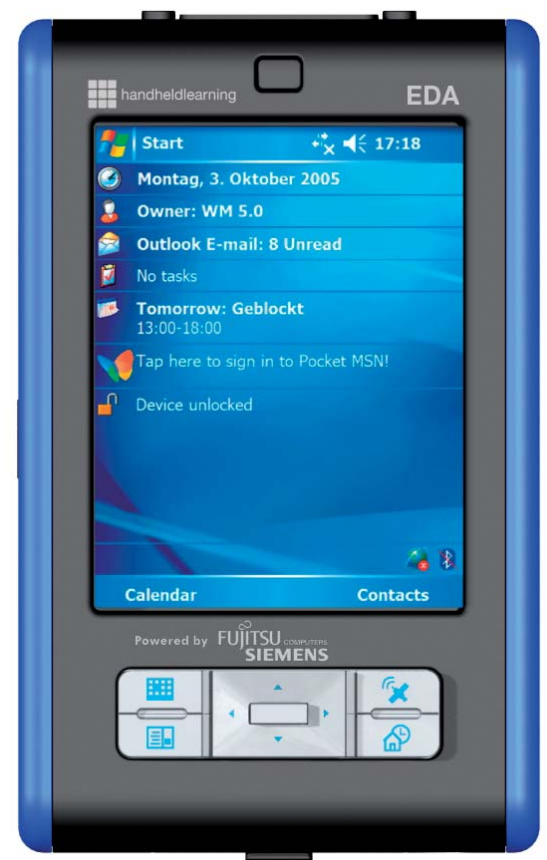
Changing the Way that Children Learn

Imagine this:

Working on a project about the Romans a student could first start to map out their ideas using Inspiration. Using the fast and accurate Calligrapher handwriting recognition software, students can use the EDA to take notes and draw in a natural manner. They can add drawings, pictures, diagrams and voice recordings to these notes. From here they would then use the web browser to search for relevant research material that they could bring into Mobile Word.

During the field trip to an old Roman site, they could use the built-in GPS key location information to augment their visit with interesting location based facts. By using the camera, they could take relevant photographs and store them with their GPS location data, allowing them to be added to a database of geographical information. Using the Red Flipper software and some modelling clay the student can create a fun and entertaining claymation to act out a famous Roman scene. All of this project work can be saved automatically to the RedHalo server which can then be reviewed by the teacher who can also use the server to distribute more materials.

These are just some samples of the benefits of the EDA in teaching our children. We are sure that there are thousands of others. Come and meet Fujitsu Siemens Computers so you can see our product and explore the opportunities that the EDA can offer you.



→ Contact

Fujitsu Siemens Computers
Fujitsu Siemens Computers Campus
The Boulevard
Cain Road
Bracknell
RG12 1HH
Phone: 01344 475000



RedHalo is an open, Web 2.0 compliant, online service for the distribution and management of digital learning content for environments where the learner is mobile and where accessing learning materials is as natural as downloading a ringtone. We call this "Learning while mobile" and our mission is to make learning personal and universally accessible.

Backup, restore, distribute, access anytime, anywhere on anything

"One excellent example of this kind of software is RedHalo"
Smartphone and Pocket PC Magazine - June 07

In the personalised learning landscape, by definition, "one size does not fit all" Certainly it's unlikely that there will be a single device for all purposes or that any device used today will be useful in 10 years time. We believe learners will use a variety of technologies as part of their learning journey subject to circumstances. Students will use mobile devices for their learning and it is vital that their work is not lost or destroyed. However many mobile devices have limited storage capability and the removable storage that does exist is easily lost. Online storage is an inexpensive way to securely and safely store this

work either as a simple back-up vault or as an organised portfolio of work. RedHalo takes care of this and by leveraging the latest Web 2.0 technologies, materials held in an account are searchable, interoperable and easily accessed anytime, anywhere on a variety of devices. In this case one RedHalo account does indeed fit all and because it is based on open, published standards it is future-proof.

Facilitating the flow of digital learning materials - the ultimate long tail

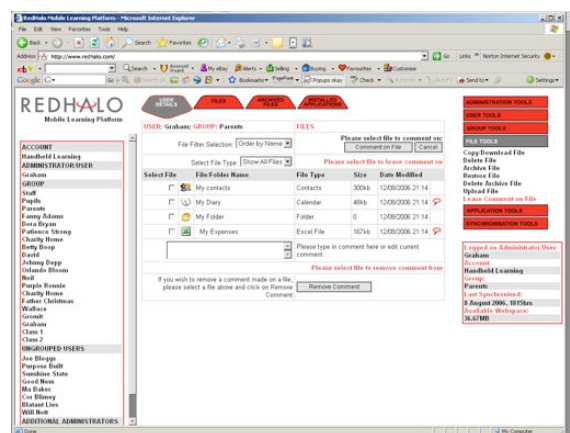
The RedHalo platform ensures data created on a device is backed up to a secure server where it may be reviewed by a teacher who may also use the same system to find and distribute content as well as new applications to each of the devices under their management. Thus a simple system of creating and handing in school work for review and handing out new work materials is established. Beyond the device and networking capabilities there are no limitations on file sizes. Interfaces are being developed to allow interoperability with 3rd party e-assessment, e-portfolio and VLE systems. We believe in collaboration, so users, developers and publishers are all free to use our open source, published interfaces to customise RedHalo and integrate it within their own systems. RedHalo is available for most devices with a web browser and is constantly being developed to support a range of mobile devices, personal computers and gaming consoles. Vitaly, RedHalo will form the backbone of a learning content exchange where teachers, authors and developers can exchange materials between each other across schools, county's or borders. We believe that personalised learning represents the ultimate long tail. Think YouTube™ for learning.

"Always on" learning

For those using wireless connections, Wi-Fi, GSM, 3G, etc., the RedHalo platform is robust. Some wireless networks are far from perfect. If a connection is disrupted RedHalo picks up from where it left off. Backing up can be tedious so RedHalo can be programmed to perform its functions at certain times without slowing down the device. Learners can then continue to use their device while RedHalo works in the background.

Large rich media files may then be distributed at more convenient times, perhaps when the device is charging overnight or even while the device is being used in class.

Teachers can even view work being created on a learners device while they are working, not just in a classroom, but wherever the learner is working - even in another country!





This feature also allows **RedHalo** to be integrated with interactive whiteboards and other projection technologies. **RedHalo** provides a platform for real anytime, anywhere learning beyond the classroom.

For learners **RedHalo** has the facility for them to mark certain files or folders as private so that they can divide school work from their personal use of the account. Further, there are no tricky passwords and log in codes to remember because once a **RedHalo** account has been defined each device establishes a digital fingerprint for access. Should a device be lost or stolen the access can be immediately closed and reassigned to a different device.

The key to **RedHalo** is versatility and flexibility. It does not limit itself to working with just a selection of applications on the mobile device and is currently compatible with a range of computing and communication devices from Pocket PC's to Ultra Mobile PC's to laptops, smartphones and game consoles.

*From July 07 **RedHalo** is available in two versions:

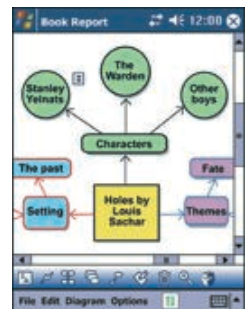
RedHalo Platform Edition is FREE provides 1Gb of online storage per user and access to all of the digital distribution and management services. This means that any school can equip every one of their students with a secure manageable account that will allow them to implement a mobile learning project. Fair use conditions apply.

RedHalo Pro Edition is available on a per device annual subscription that provides 5Gb of online storage, tape back-ups, access to the remote server and management application, a suite of software applications (currently for Windows Mobile or UMPC) and all software and maintenance updates during the year.

RedHalo Pro is provided with an incredible suite of award winning applications including:

Inspiration® for Pocket PC or UMPC

Inspiration® is the essential tool students rely on to plan, research and complete projects successfully. With the integrated Diagram and Outline Views, they create graphic organizers and expand topics into writing. This powerful combination encourages learning in multiple modes. As a result, students gain and retain a better understanding of concepts and demonstrate knowledge, improving their performance across the curriculum.



PhatPad for Pocket PC or UMPC

The award-winning PhatPad is an advanced notes organizer for Pocket PCs and UMPCs. It allows you to draw pictures, jot text notes, or put a mixture of pictures and typed text on a virtual scratch pad. Using new digital ink technology, providing a very smooth ink flow, it feels like writing on a piece of paper. You can export your notes and drawings as bitmap, JPEG or PNG images, email them as file attachments, and transfer them between devices via infrared for collaborative learning.



PhatPad also supports a basic shape recognition engine that allows drawing of smooth geometrical shapes, such as rectangles, circles, triangles and straight lines.

Animations up to 1000 frames may be created with a palette of over 64,000 colours.

Background images may be added as can voice annotation, sound fx, soundtracks or other audio.



Calligrapher for Pocket PC or Pen Office for UMPC

Opera web browser for Pocket PC and UMPC

Pocket Painter & Photo Explorer (Pocket PC only)

Red Media Composer and Red Flipper (Pocket PC only)

Specifications subject to change without notice.
Red-Halo™ is a registered trademark of Red Halo Systems Ltd
For more information, contact **RedHalo** on +44 (0) 207 511 8773

REDHALO

free sign-up at www.redhalo.com